



# Looking for Landscape Scale

**ADMG**

5<sup>th</sup> December 2023

### Indicative Boundary

Map shows the target Affric Highlands area.  
Not every land ownership in the area  
has joined the initiative.







Affric Highlands

**Landscape  
perspectives**

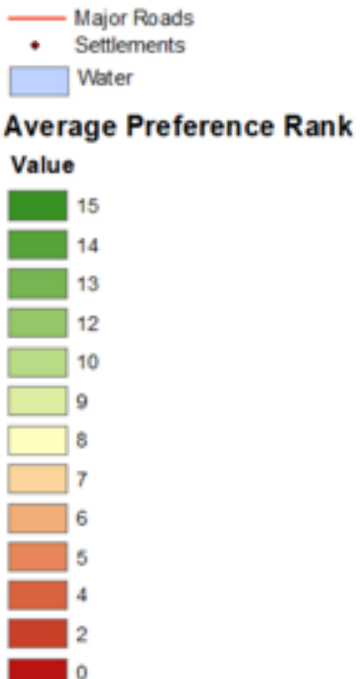
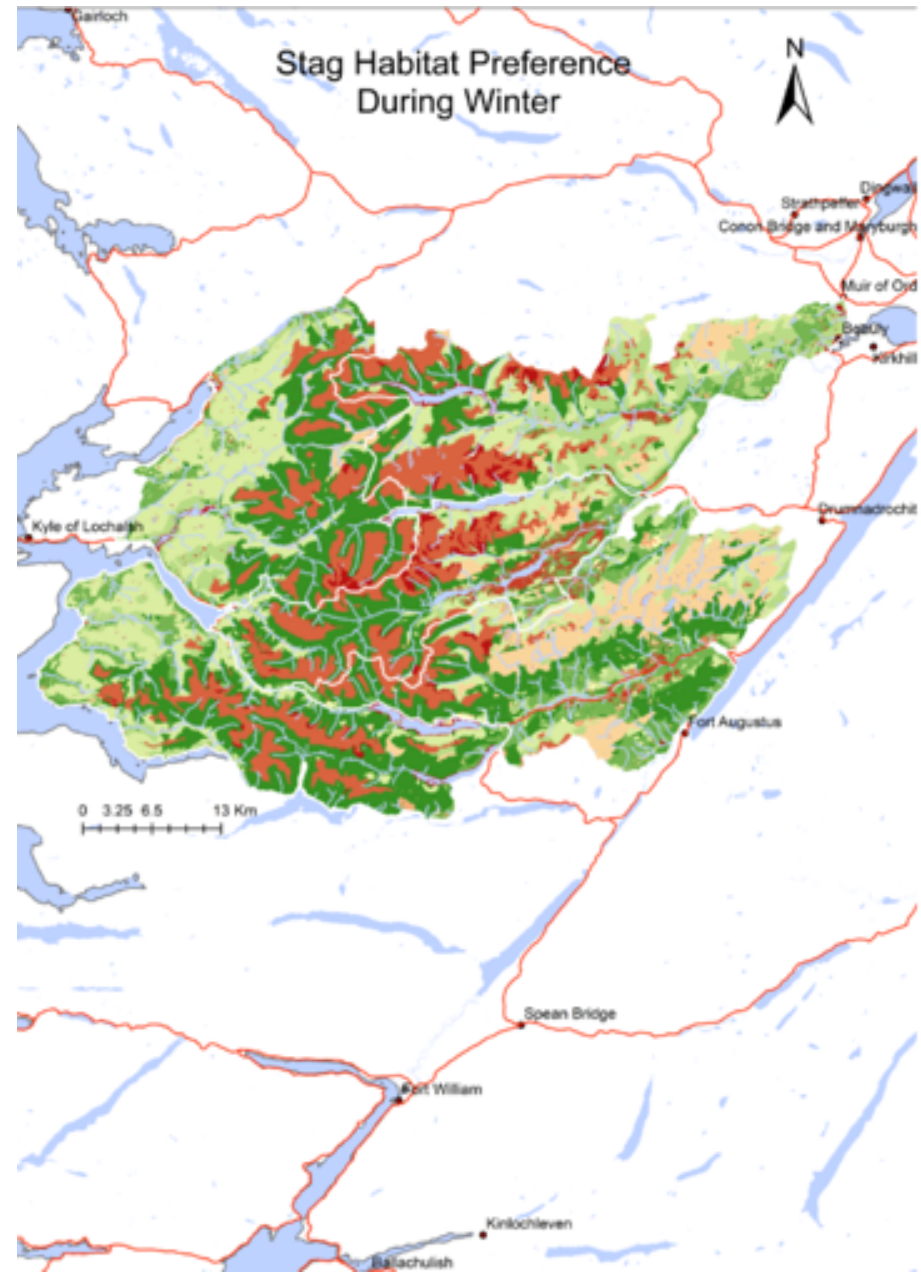
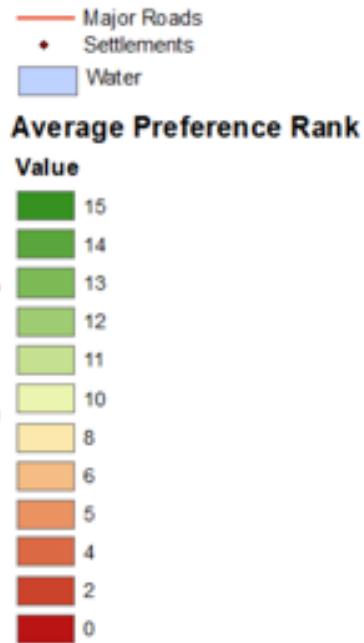
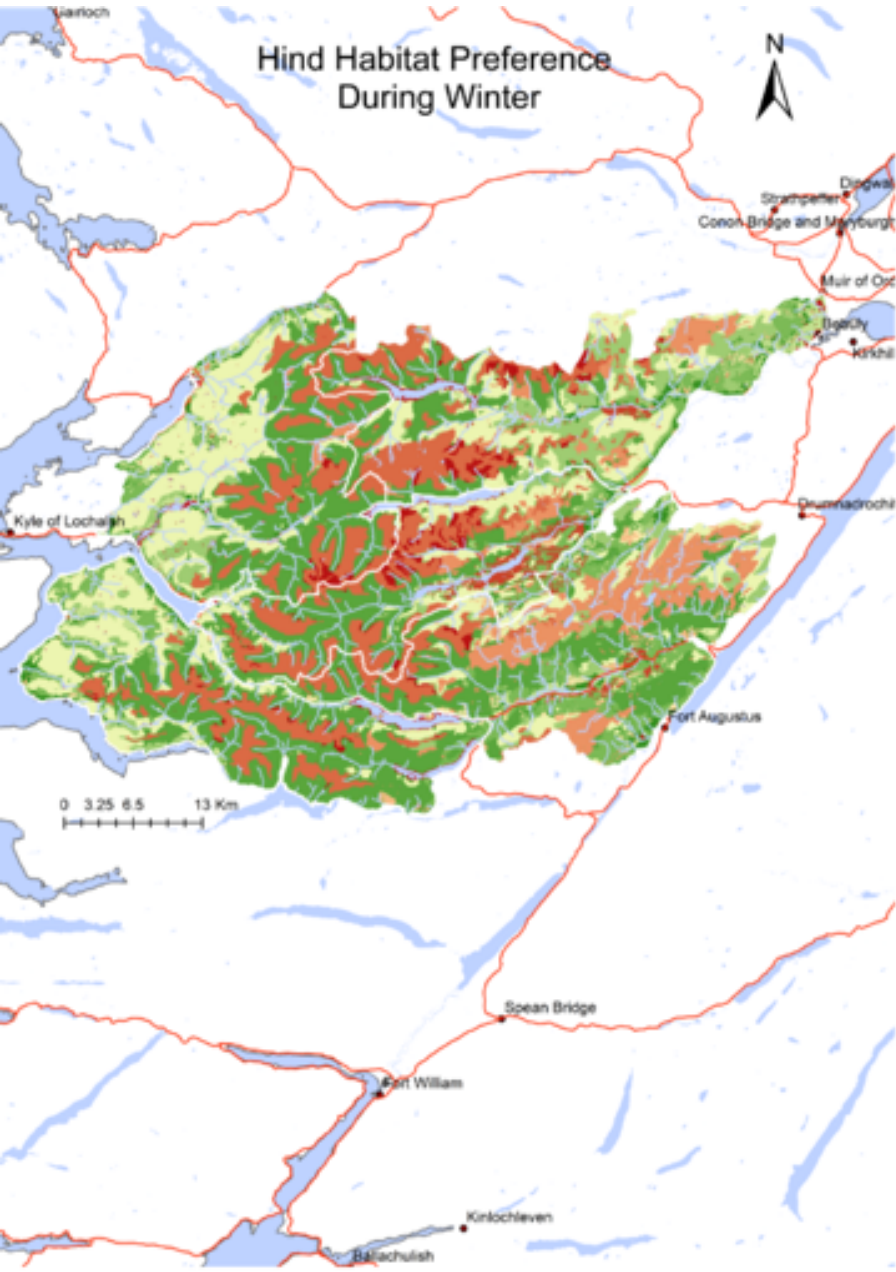
Research – historic maps and records

Field survey

- Prioritise and phase:
- Wild Tree remnants
  - Ghost Woods
  - Peatland



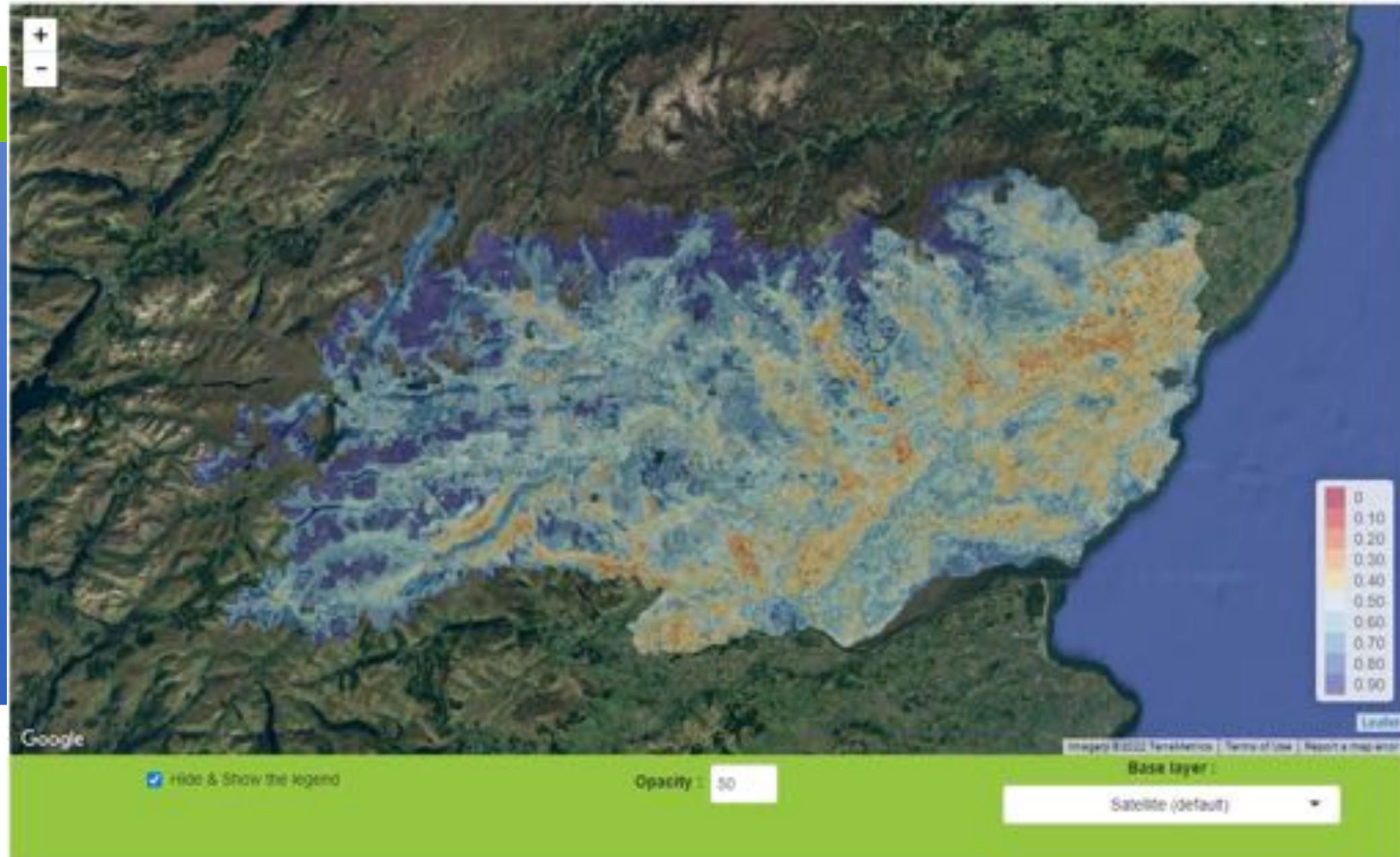
# Winter Foraging Habitat Preference





## Mapping area

The best value is 1 (blue) and the worst 0 (red) for the project chosen Expansion considering these criteria, the weights selected and the chosen method



### Select Season

Rut  
Winter  
Summer

### Select Sex

Hinds  
Stags  
Both

Click to download maps





# Likelihood of red deer hinds using Creag Meagaidh in winter with a north-westerly wind, as predicted by DeerMAP

Likelihood of red deer being found in an area



High likelihood of occurrence

Low likelihood of occurrence

Map date 3 December 2004

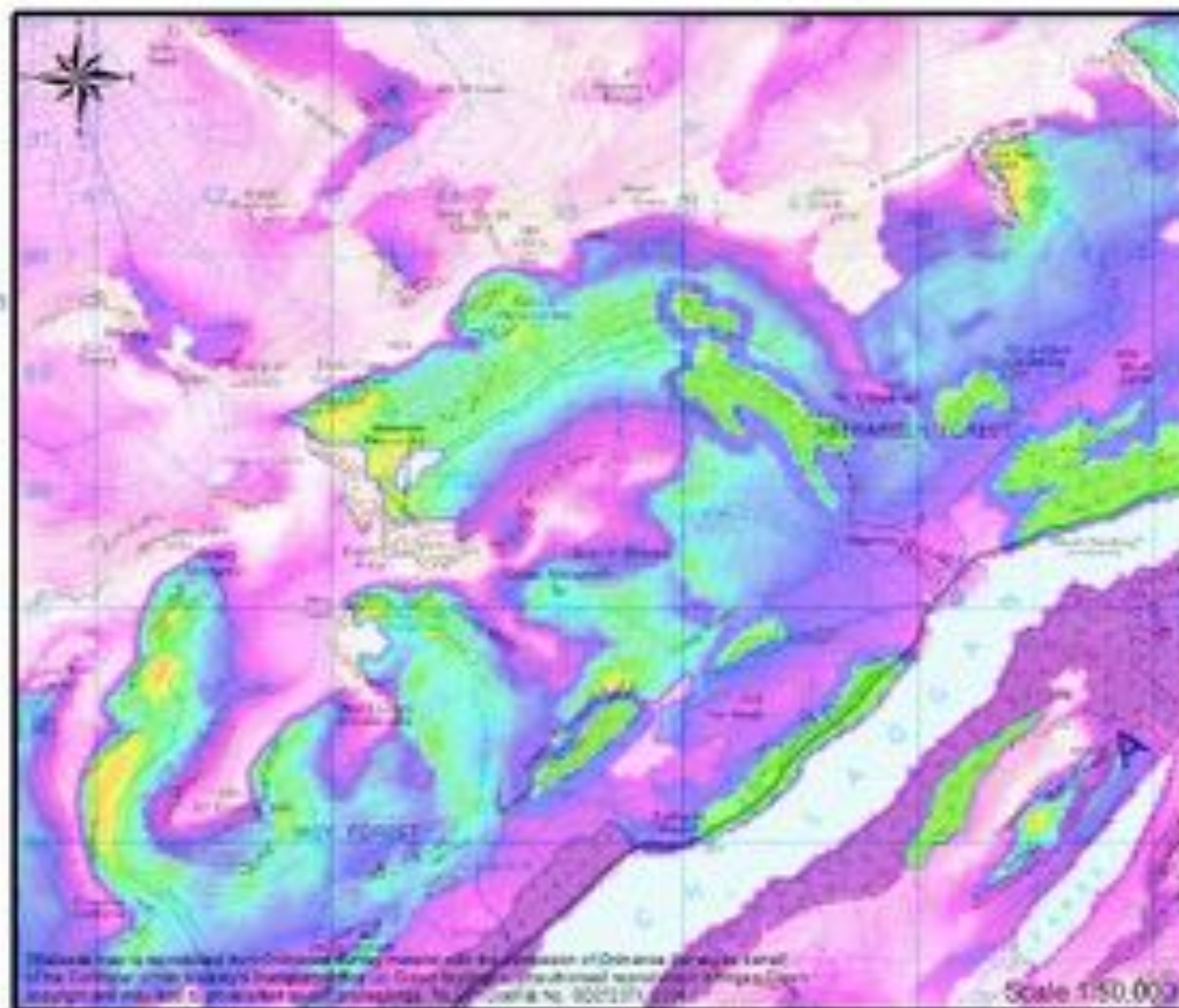
DeerMAP assesses the likelihood of red deer using an area under the assumption that deer are most likely to be found in areas providing shelter, good grazing and little human disturbance.

Map generated by the Macaulay Institute DeerMAP programme developed by Sue O'Brien, John deGooze and Jim McLeod, with help from the staff of Creag Meagaidh NNR.

[www.macaulay.ac.uk/DeerMAP](http://www.macaulay.ac.uk/DeerMAP)

All rights reserved. No part of this publication may be reproduced, stored in a retrieval system or transmitted in any form or by any means, electronic, mechanical, photocopying, recording or otherwise, without prior permission of the Macaulay Land Use Research Institute. Some use of this work is permitted for non-commercial purposes only. Please contact the Macaulay Land Use Research Institute for more information.

The Macaulay Institute  
Craigiebuckler  
Aberdeen  
AB15 8QH  
Tel: +44 (0)1224 408200  
Fax: +44 (0)1224 311886



Rewilding the Scottish Highlands  
Adh-ùrlachadh na Gàidhealtachd


DeerMAP is in the early stages of development and may not yet accurately reflect actual deer behaviour caused by local deer management policies



# Likelihood of red deer hinds using Creag Meagaidh with a NW wind and walkers on paths, as predicted by DeerMAP



Likelihood of red deer being found in an area



High likelihood of occurrence

Low likelihood of occurrence

Map date 7 December 2004

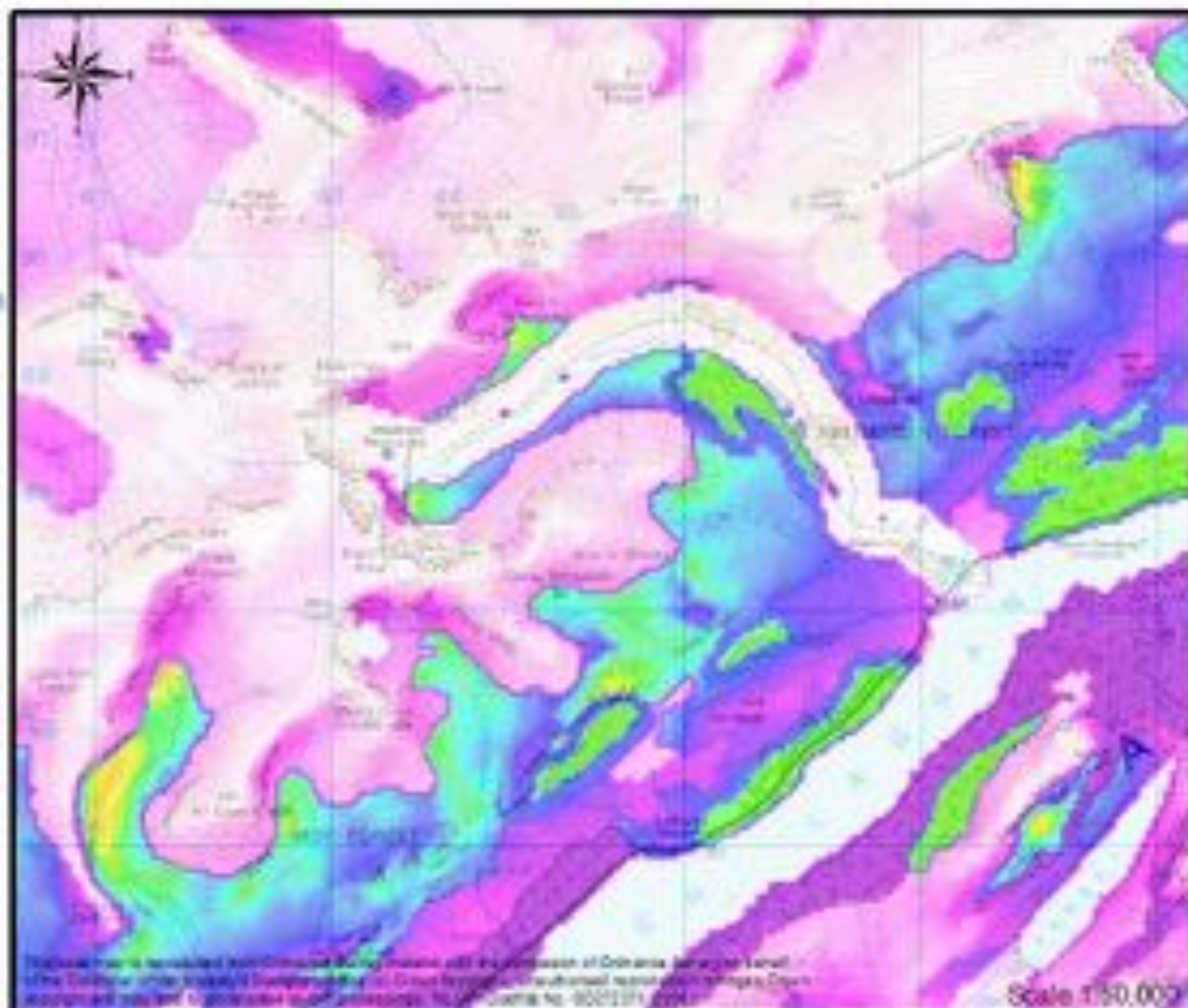
DeerMAP assesses the likelihood of red deer using an area under the assumption that deer are most likely to be found in areas providing shelter, good grazing and little human disturbance.

Map generated by the Macaulay Institute DeerMAP programme developed by Sue O'Brien, John deGroot and Jim McLeod, with help from the staff of Creag Meagaidh NNR.

[www.macaulay.ac.uk/DeerMAP](http://www.macaulay.ac.uk/DeerMAP)

The Macaulay Institute  
Craigiebuckler  
Aberdeen  
AB15 8QH  
Tel: +44 (0)1224 406000  
Fax: +44 (0)1224 311554

All rights reserved. No part of this publication may be reproduced, stored in a retrieval system or transmitted in any form or by any means, electronic, mechanical, photocopying, recording or otherwise, without prior permission of the Macaulay Institute Research Institute. Some data on this map are derived from the 25000 contour map of the area, which is Crown Copyright 1982.



deag the Scottish Highlands  
hàchachadh na Gàidhealtachd

Scale 1:50,000

# Our Common Ground Accord

in relation to upland deer management in Scotland

## We commit ourselves to:

- Identify the common purpose
- Respect our diversity of objectives
- Keep an open mind
- Listen to understand
- Engage honestly
- Work for mutually beneficial solutions
- Apply these principles in public facing communications on contentious issues



Rewilding the Scottish Highlands  
Ath-thìachachadh na Gàidhealtachd



Affric Highlands

## Affric Highlands & Venison

- Dundreggan larder and processing unit
- Support people to process and sell more venison from the area
- Investment into processing facilities
- Finding local outlets
- Venison subsidy

Trees for Life

