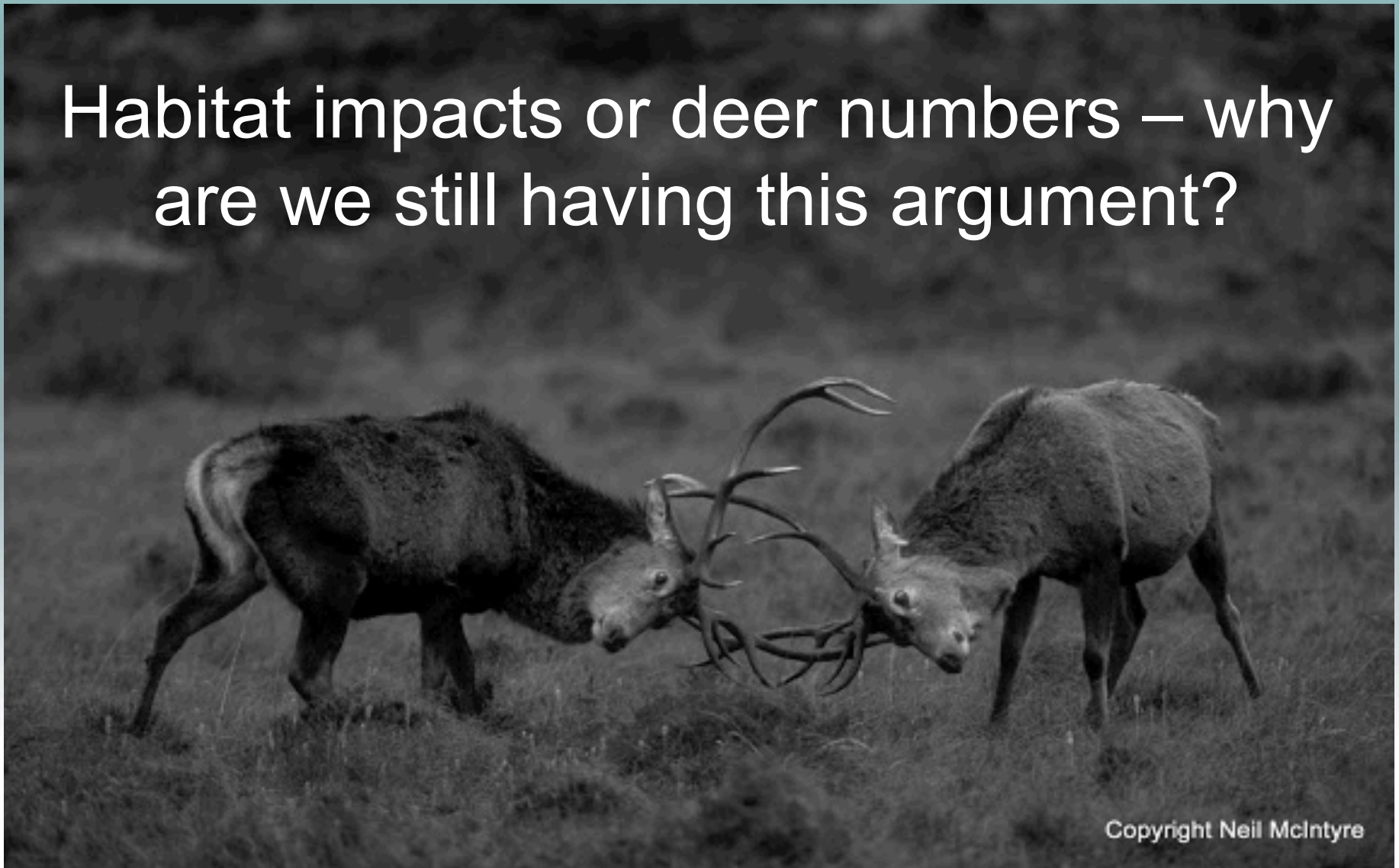
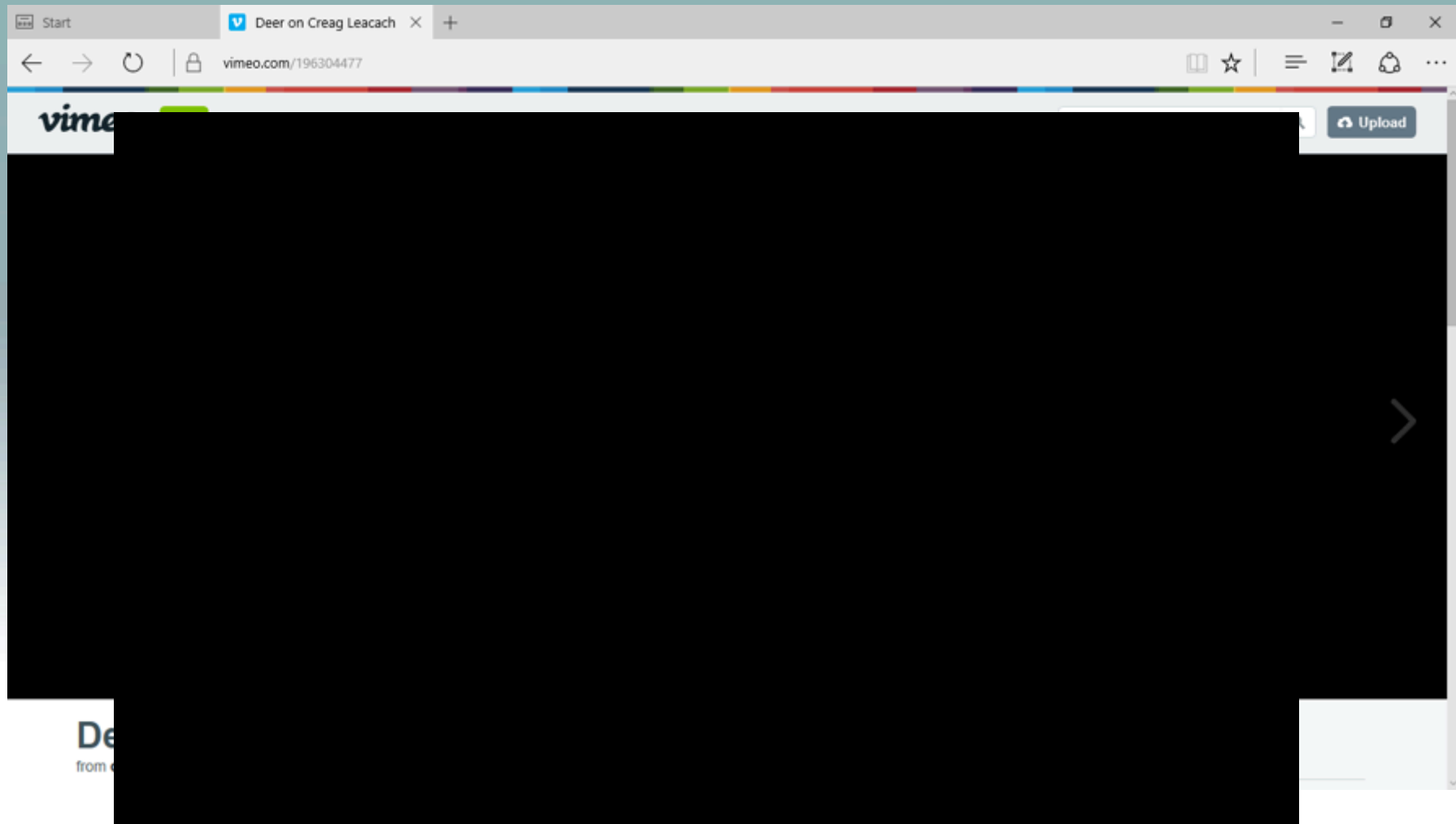


Habitat impacts or deer numbers – why are we still having this argument?





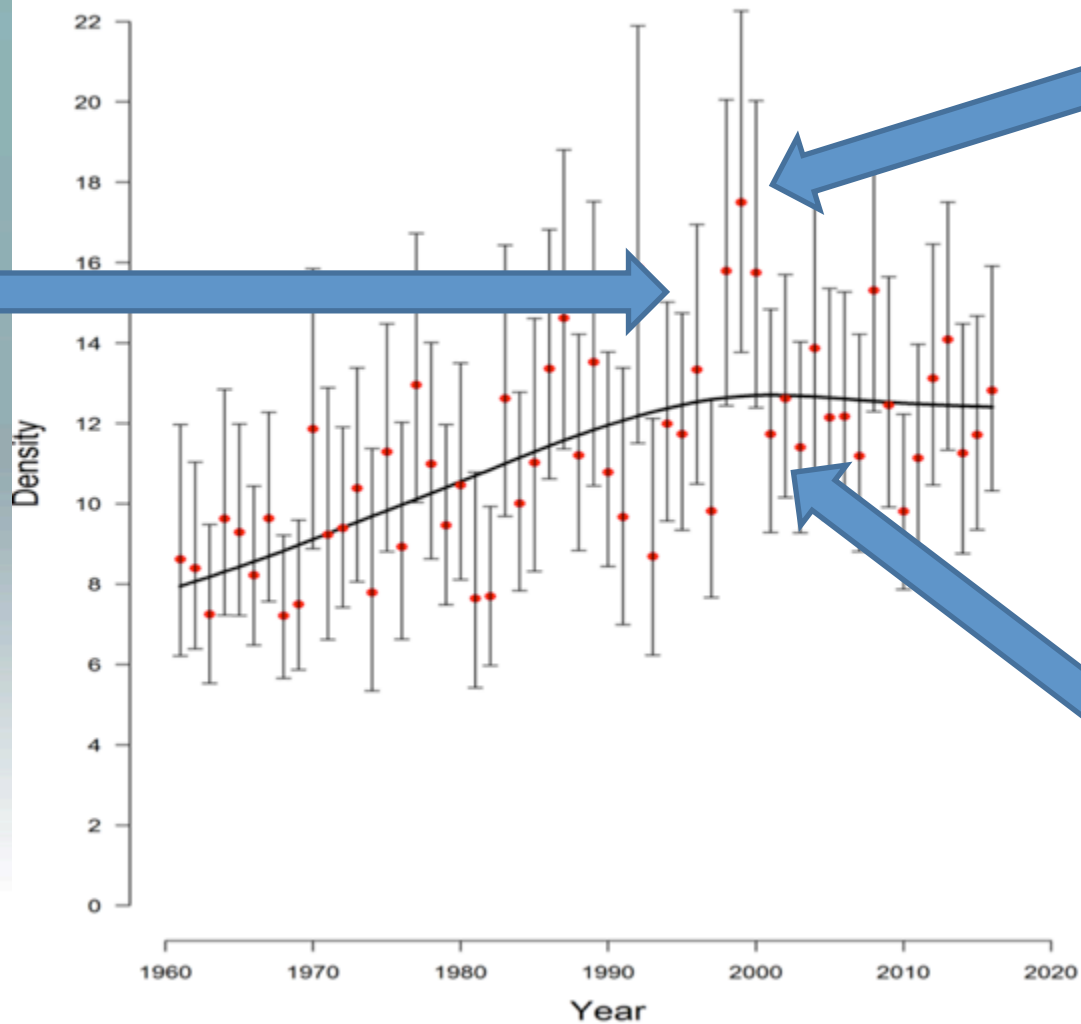
Epidemic?



Credit : Brian Shackleton (Scottish Mountaineering Trust).



1993 – First
time culls
had
exceeded
recruitment



By 2000 –
Deer
Populations
had risen in
70% of
Groups

2001 – DCS
switches
emphasis
onto
Impacts

Figure 3.1. Annual estimates (red dots) between 1961 and 2016 of the mean red deer density (deer/km²) on open-hill ground across Scotland (SNH Review)





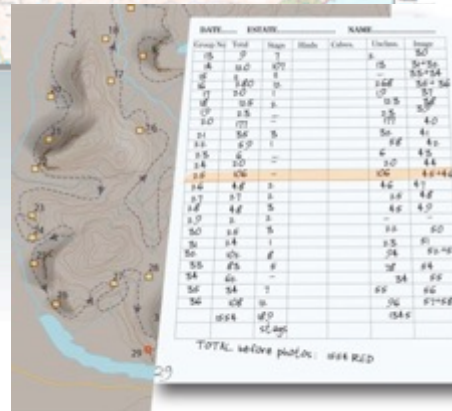
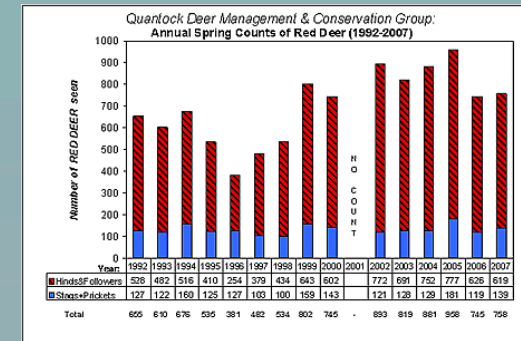
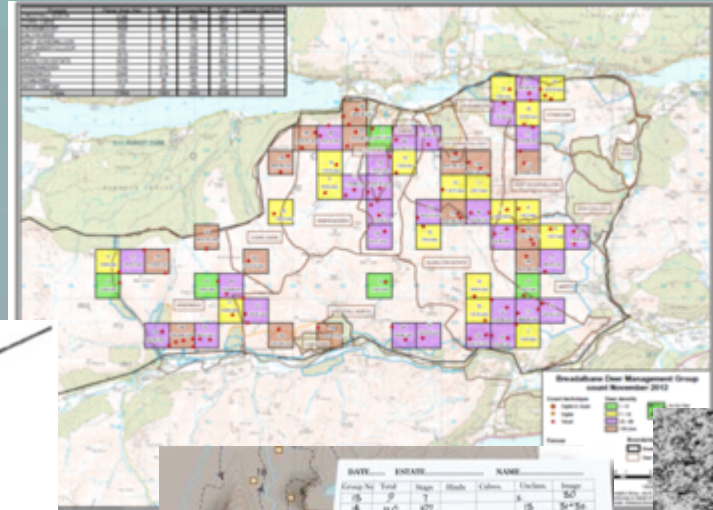
How many deer....

**And what's the magic
number.....**



Copyright Neil McIntyre

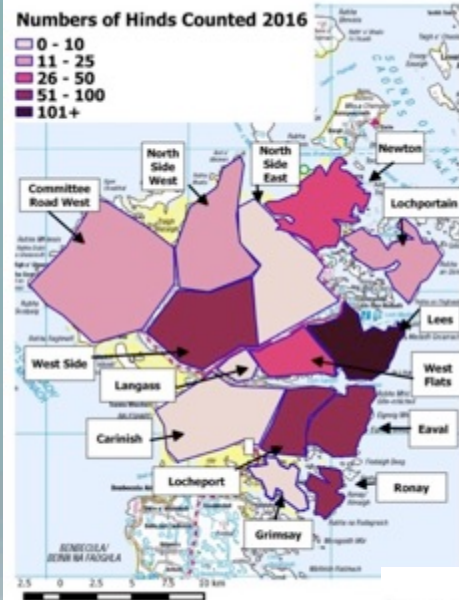
Why count?



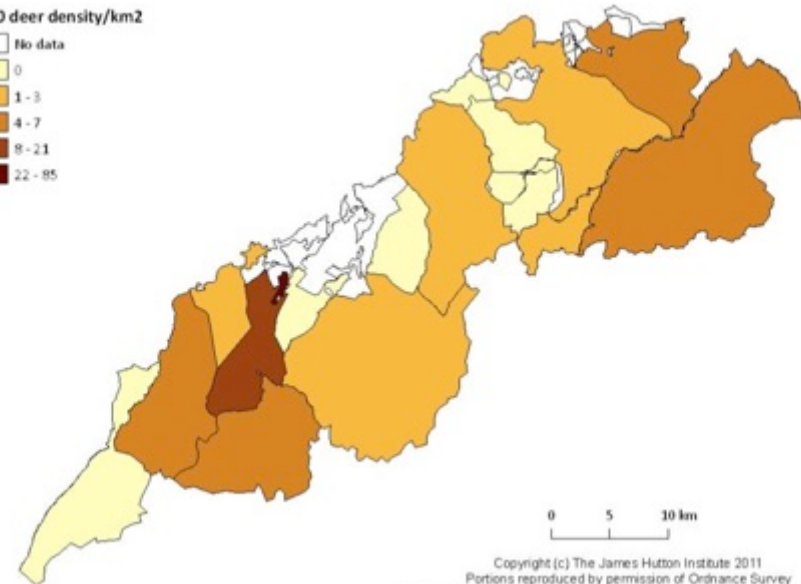
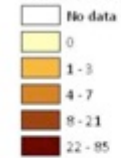
Provides data on:

- **Deer numbers at a population scale**
- **Provides data on recruitment**
- **Information on trends**

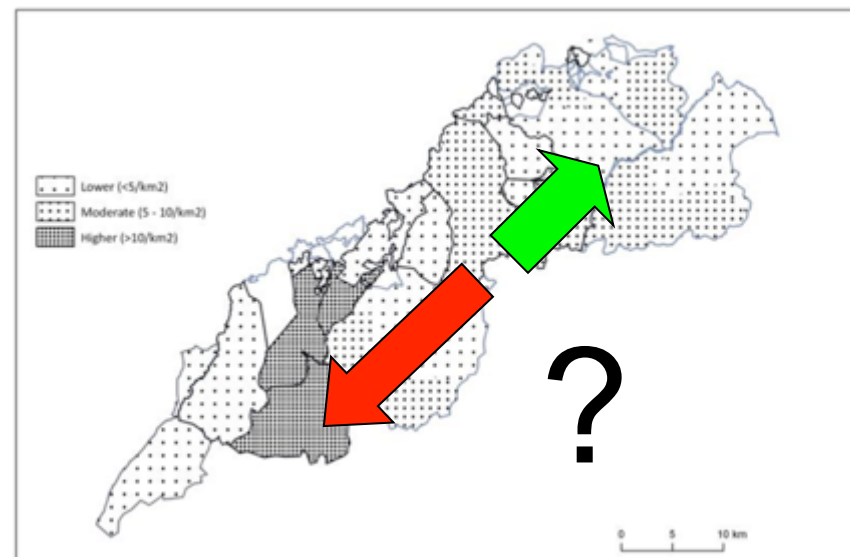
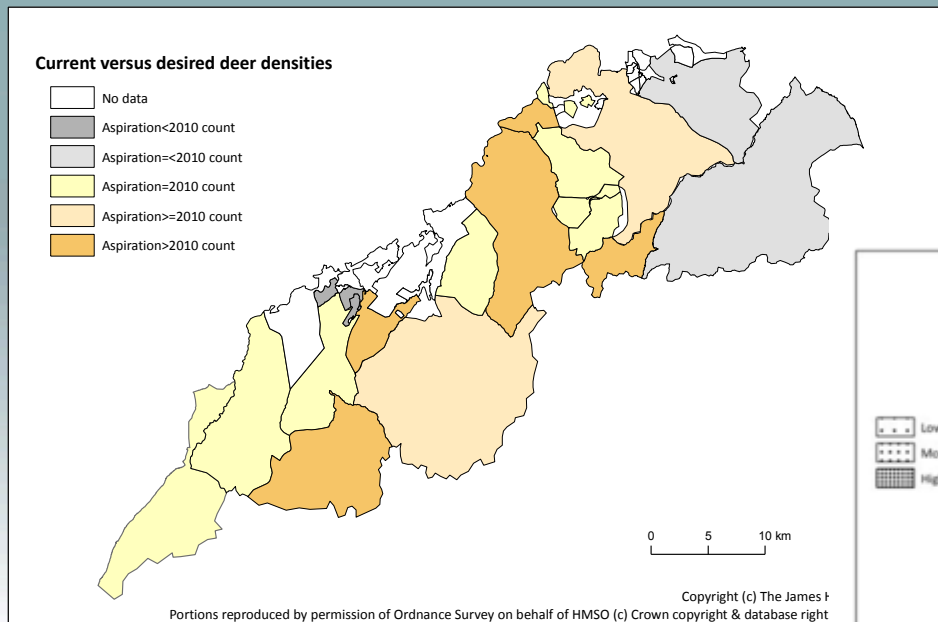
Deer Density



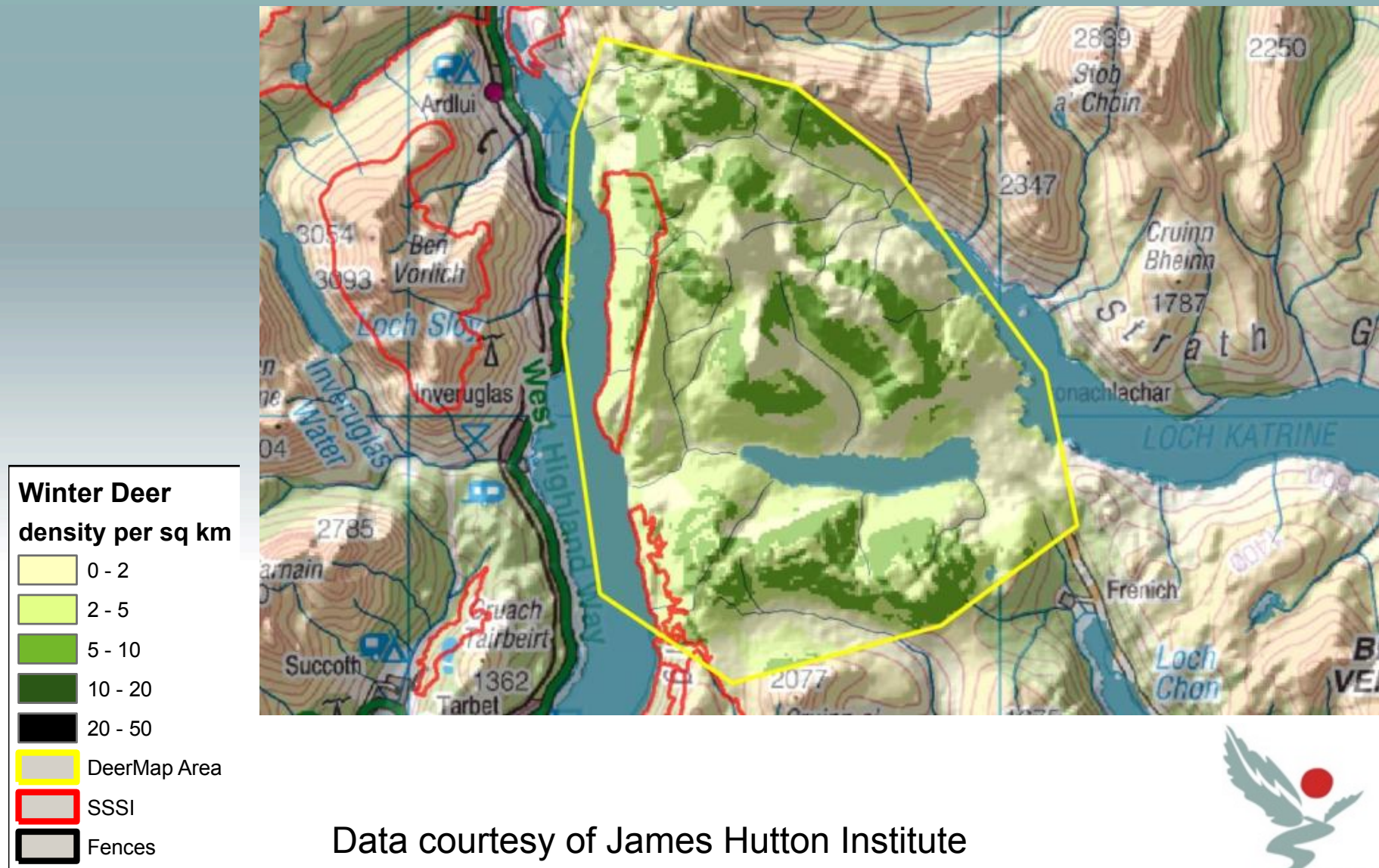
2010 deer density/km²



Changes in Objectives and Impacts on Deer Movements

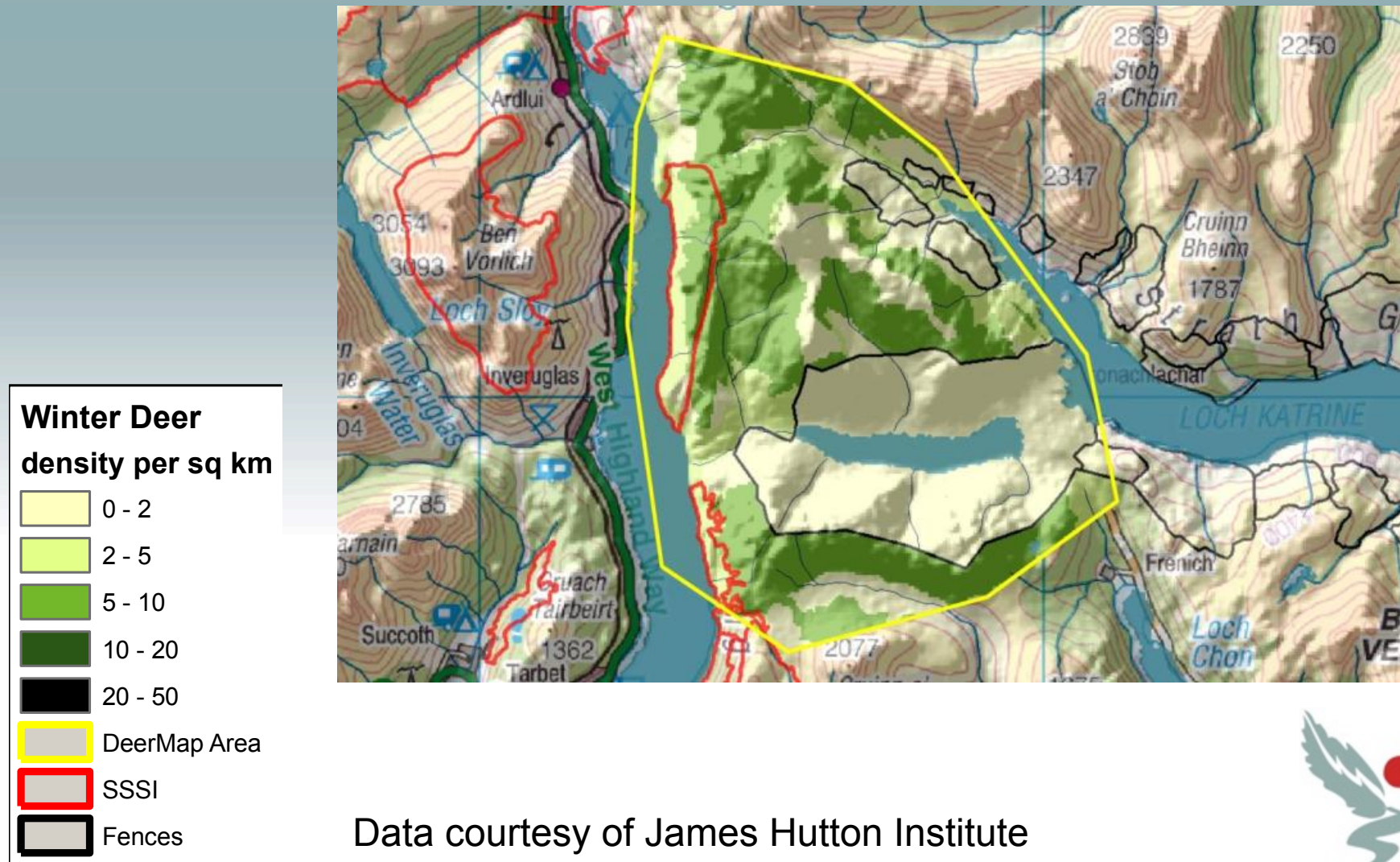


Predictive planning: impacts of proposed fencing on SSSI woodland. 134 hinds, 66 stags, no fences



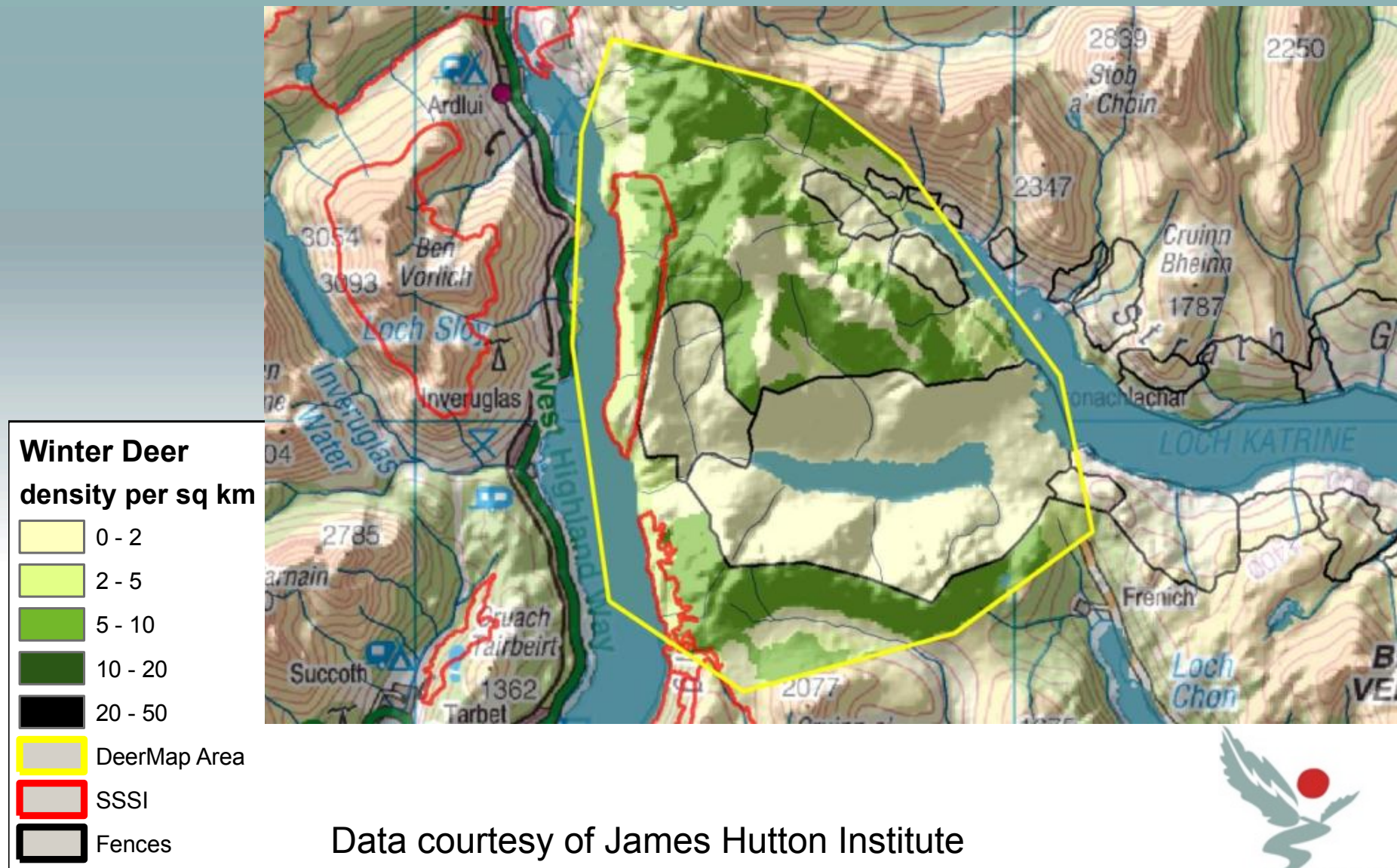
Data courtesy of James Hutton Institute

Predictive planning: impacts of proposed fencing on SSSI woodland: 134 hinds, 66 stags, plus fences



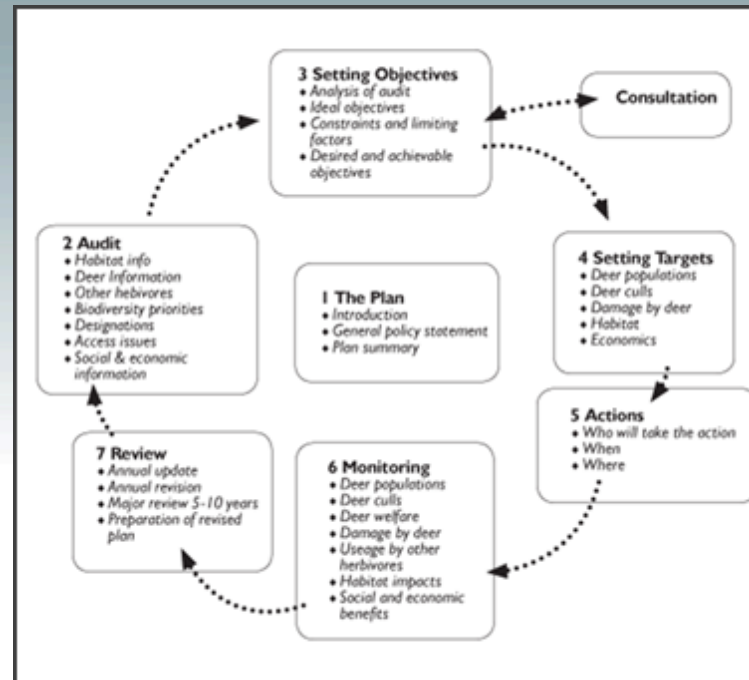
Data courtesy of James Hutton Institute

Predictive planning: impacts of proposed fencing on SSSI woodland: 134 hinds, 66 stags, plus fences



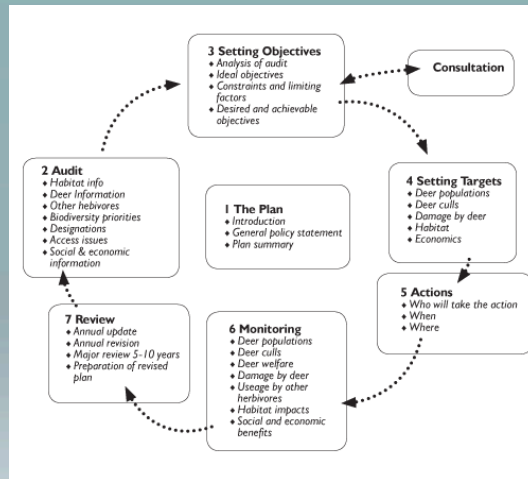
“Plans are nothing; planning is everything”

Dwight D. Eisenhower



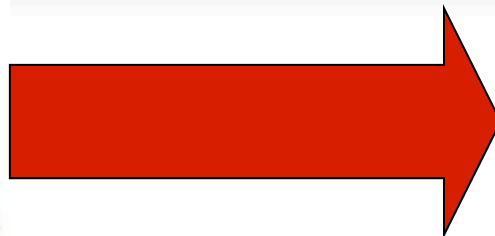
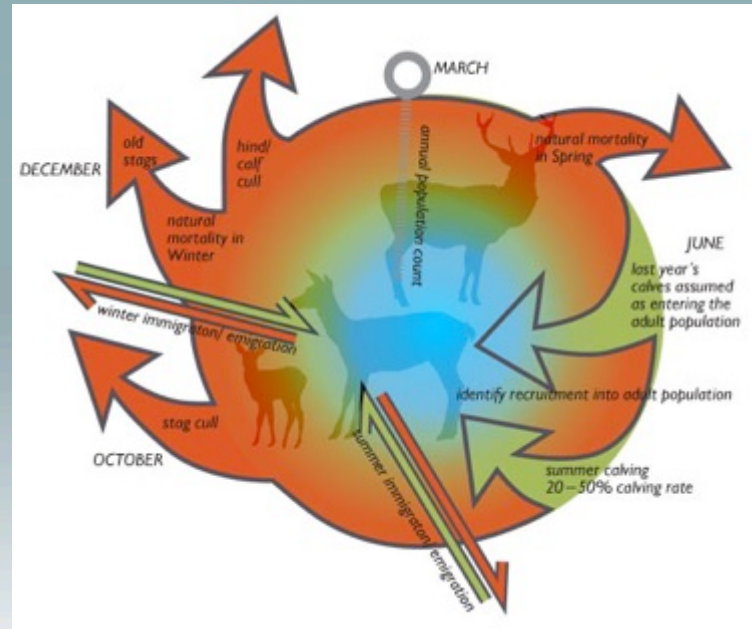
Setting Cull Targets

The process of setting targets will require information on:

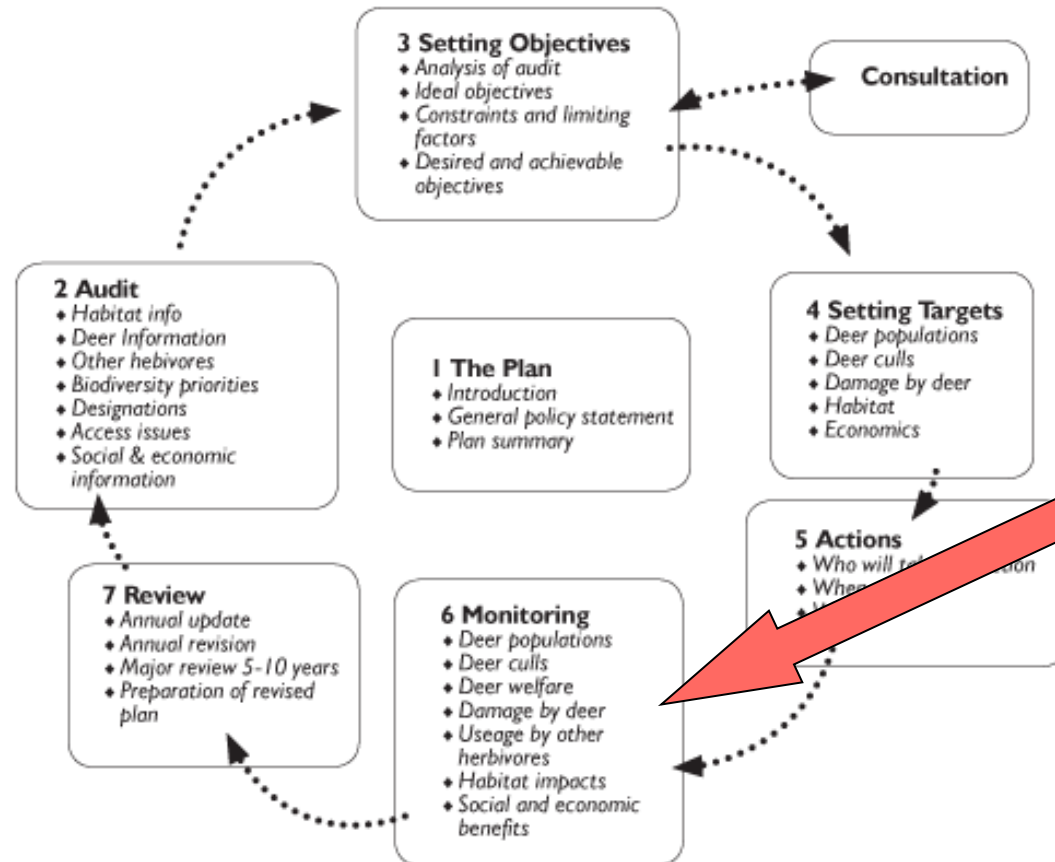


Population Modelling

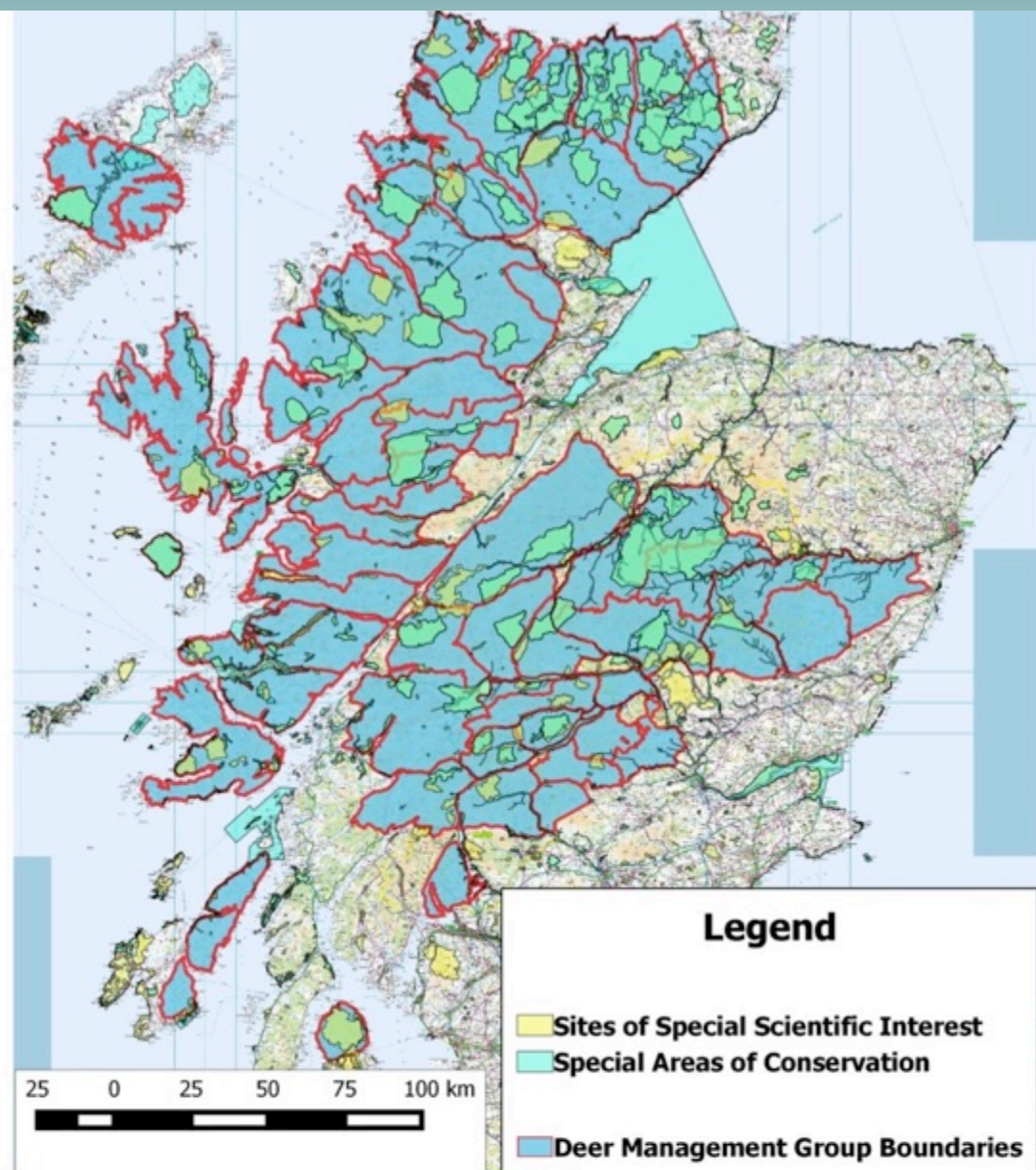
Caution!



Deer Management Planning

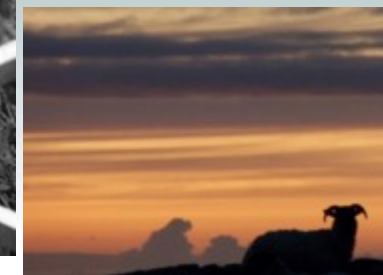


Monitoring is absolutely critical to determine if objectives have been met and to help inform future deer management

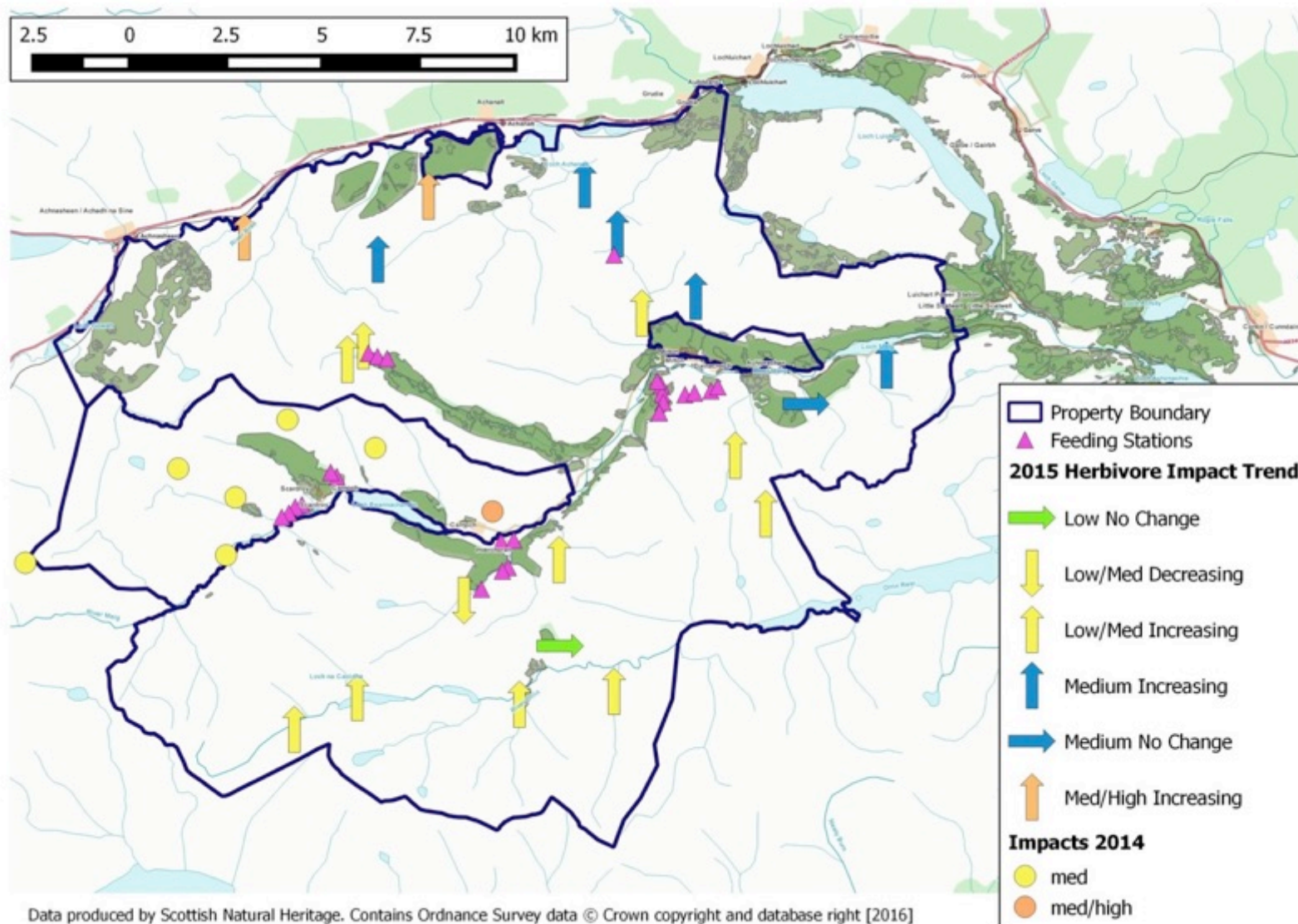


Data produced by Scottish Natural Heritage. Contains Ordnance Survey data © Crown copyright and

Habitat Monitoring



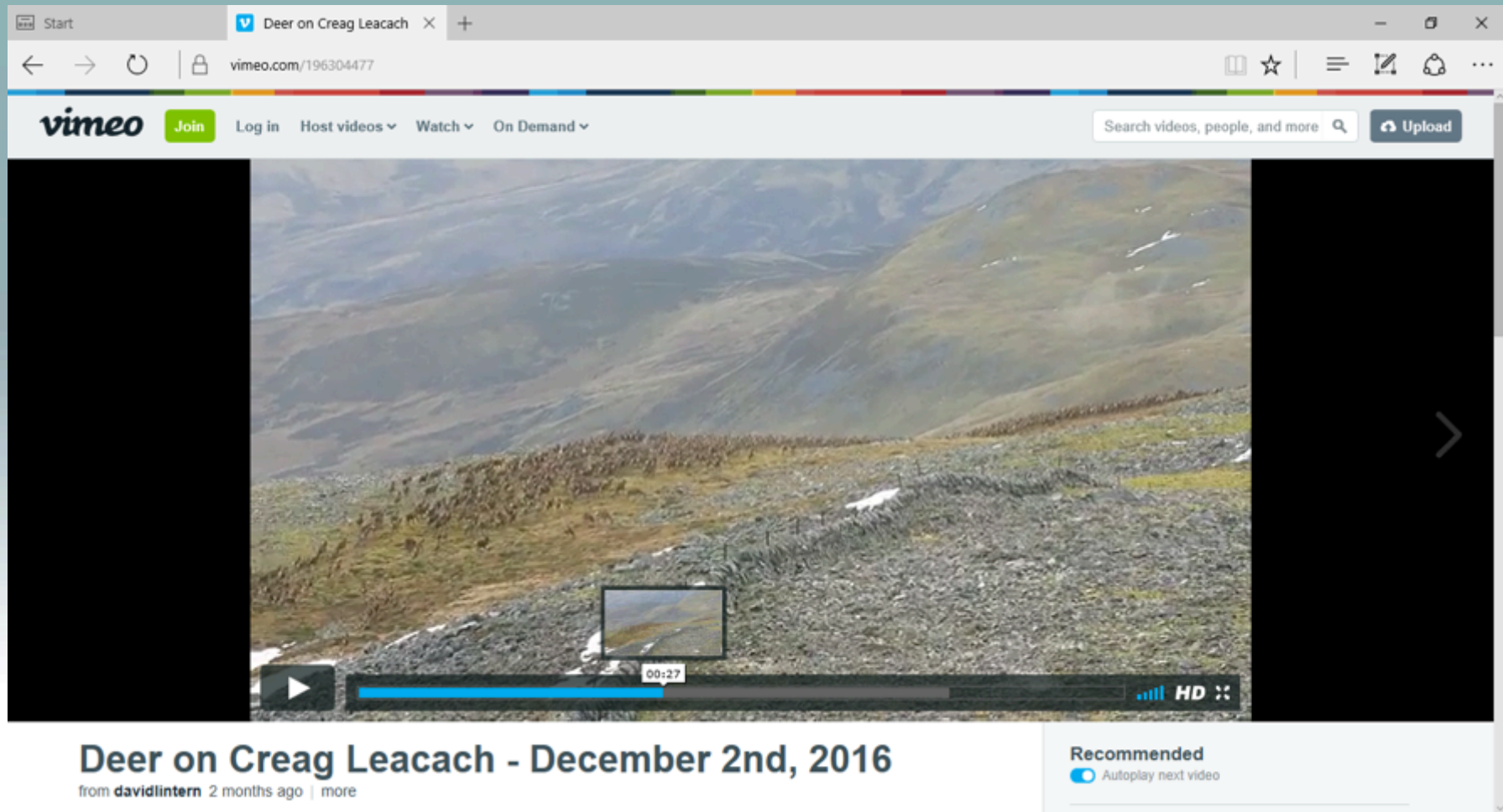
- All DMGs should carry out habitat monitoring on a systematic and regular basis
- Data is required on other herbivores present





Commitment, Resources & Communication

Epidemic?



Credit : Brian Shackleton (Scottish Mountaineering Trust).

